



By Younes Lamari

PORTEFOLIO



Presentation

Ingénieur en génie civil avec une spécialisation en charpente métallique, fort d'expériences concrètes dans des bureaux d'études et centres techniques. Maîtrise des logiciels de conception et de calcul de structures. Compétent en élaboration de plans d'exécution, notes de calculs et coordination technique de projets. Sérieux, responsable et passionné par l'ingénierie des structures.

RPA 2024

EUROCODE



DTR

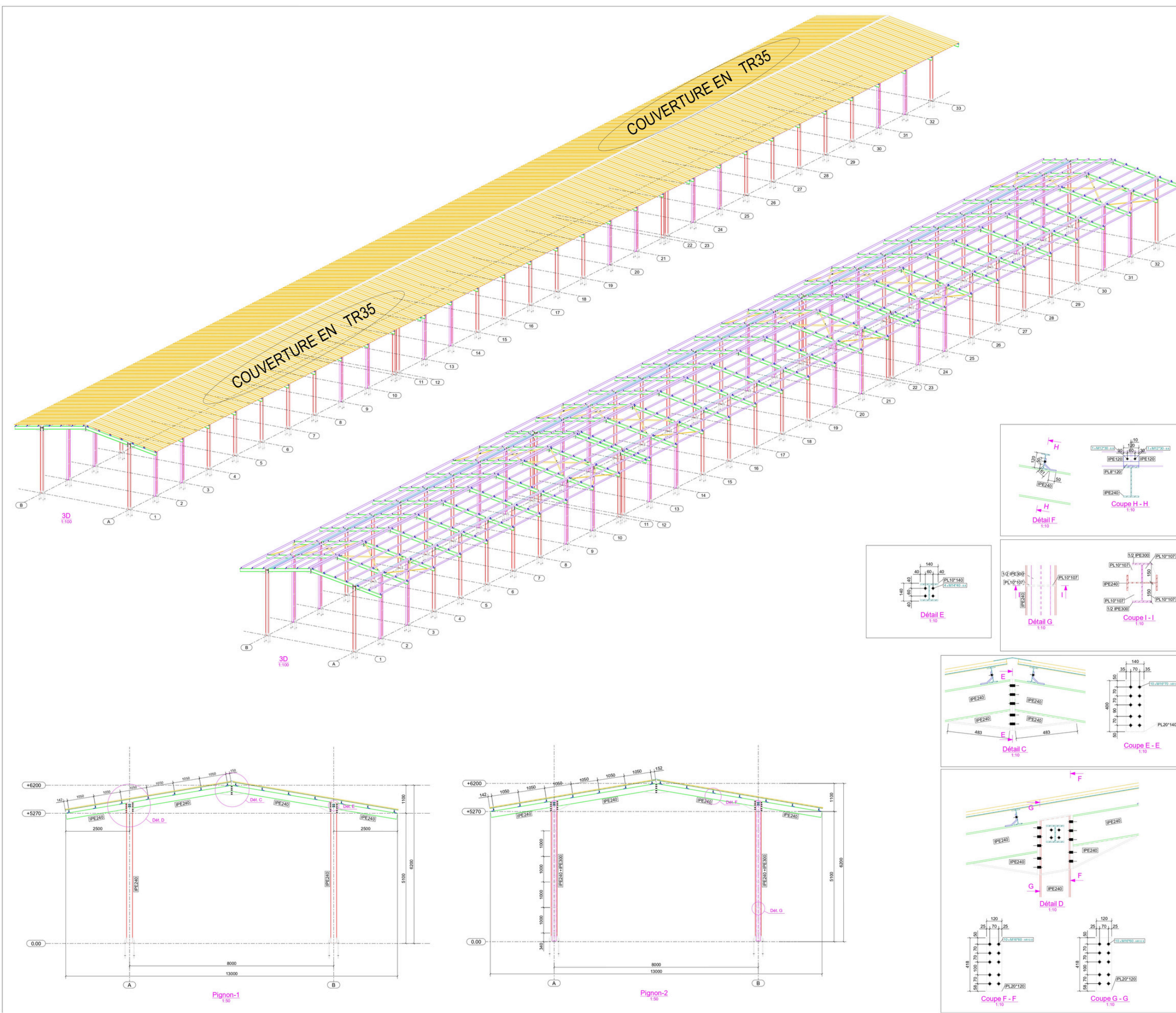




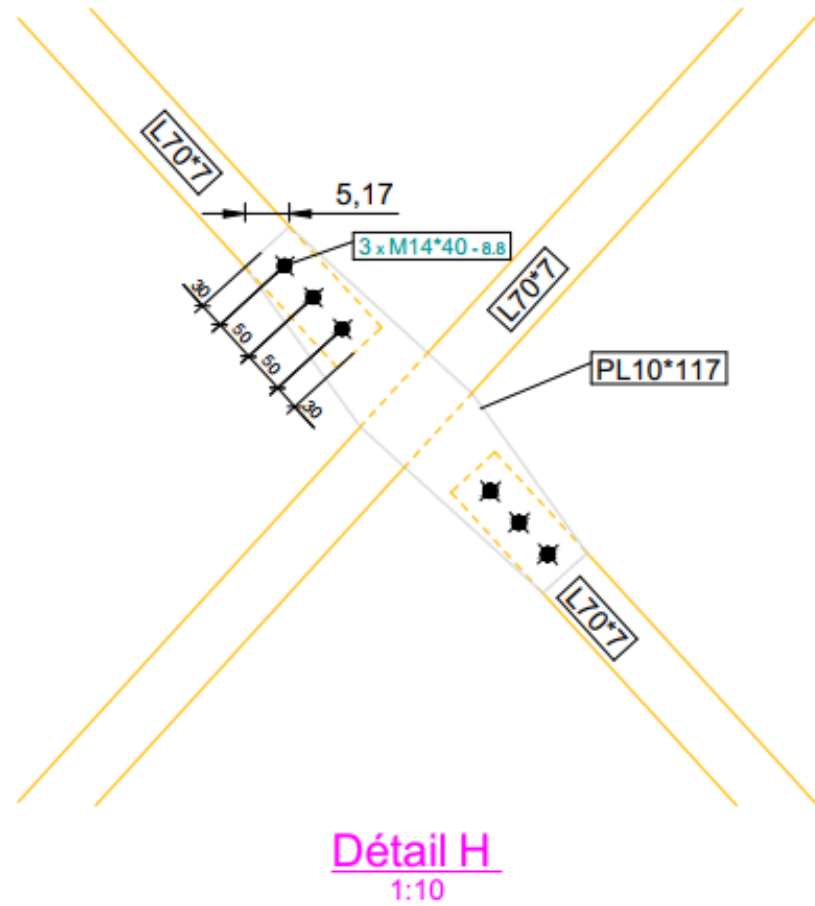
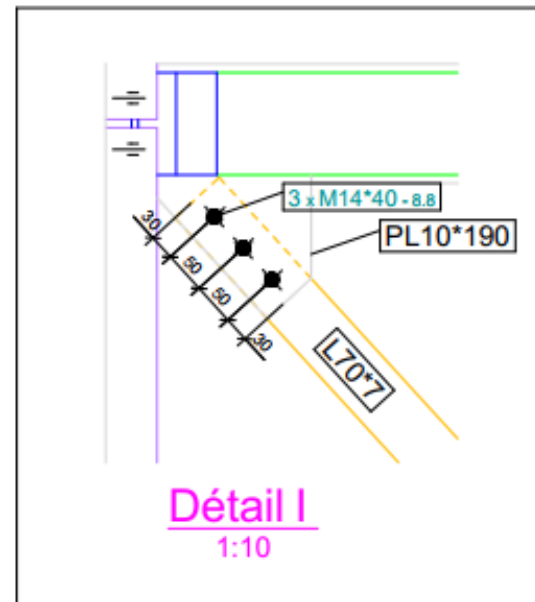
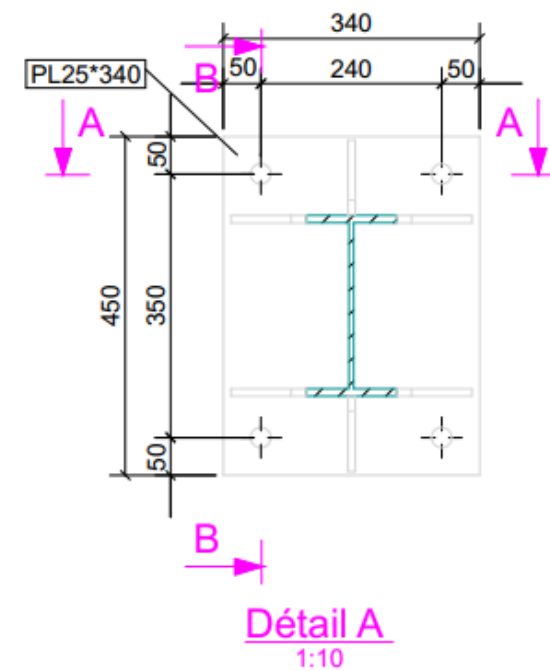
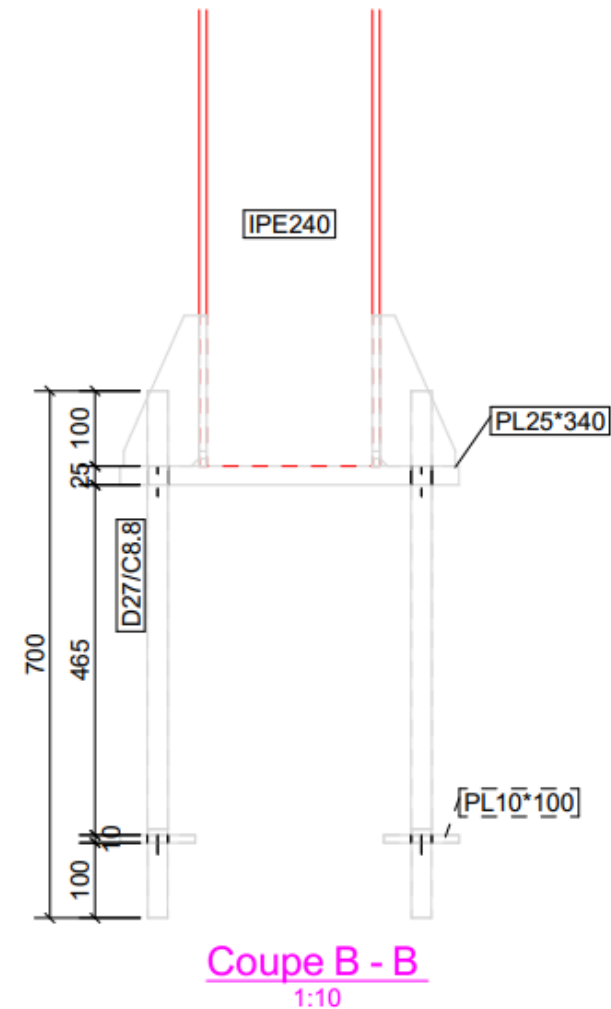
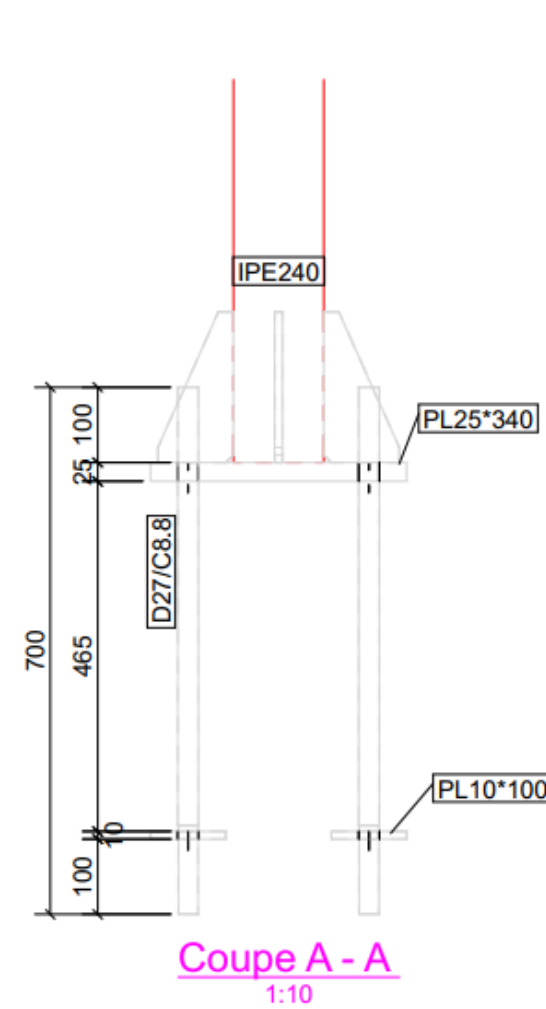
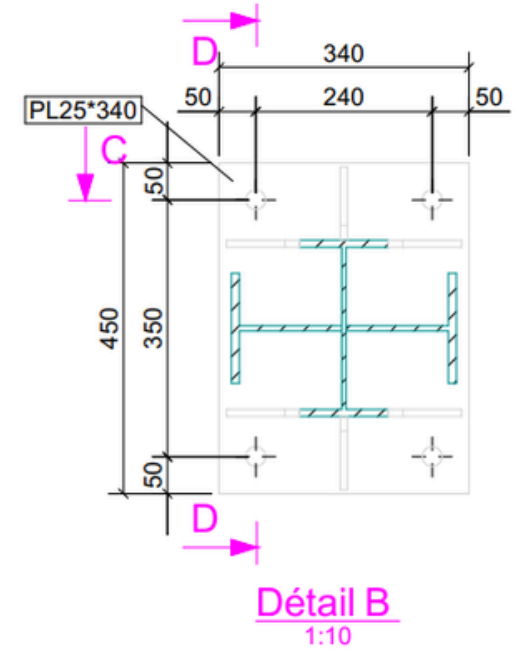
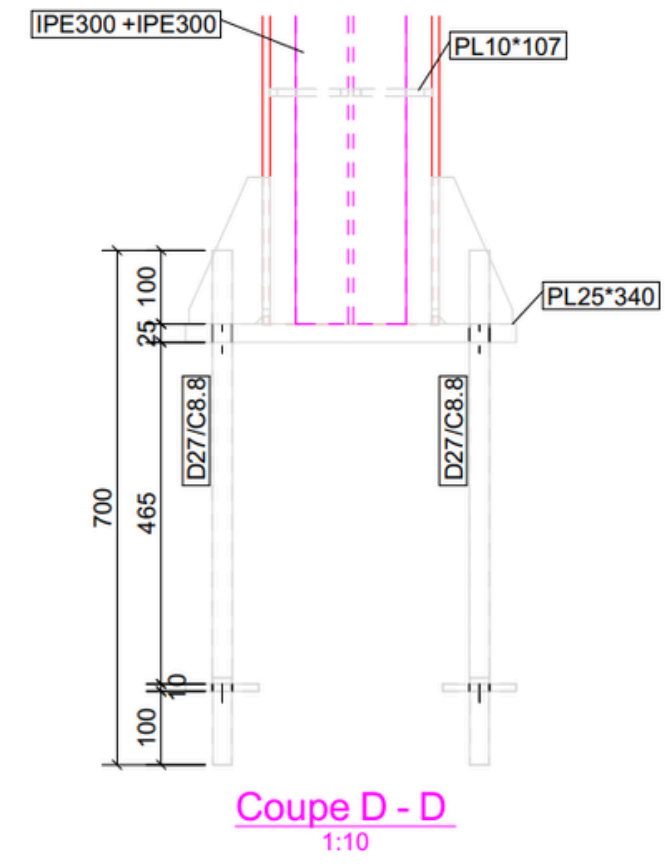
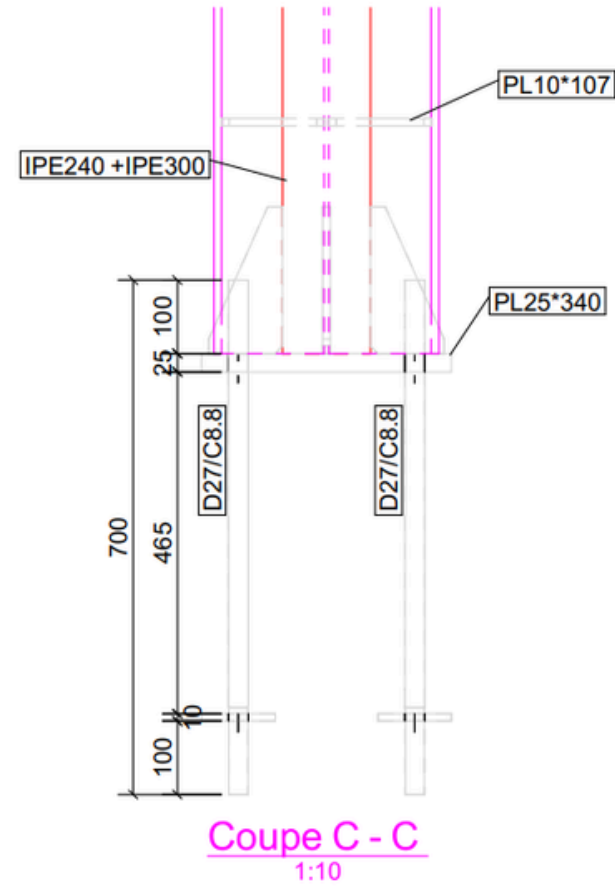
PROJETS



Abris poids lourds



détails du plan

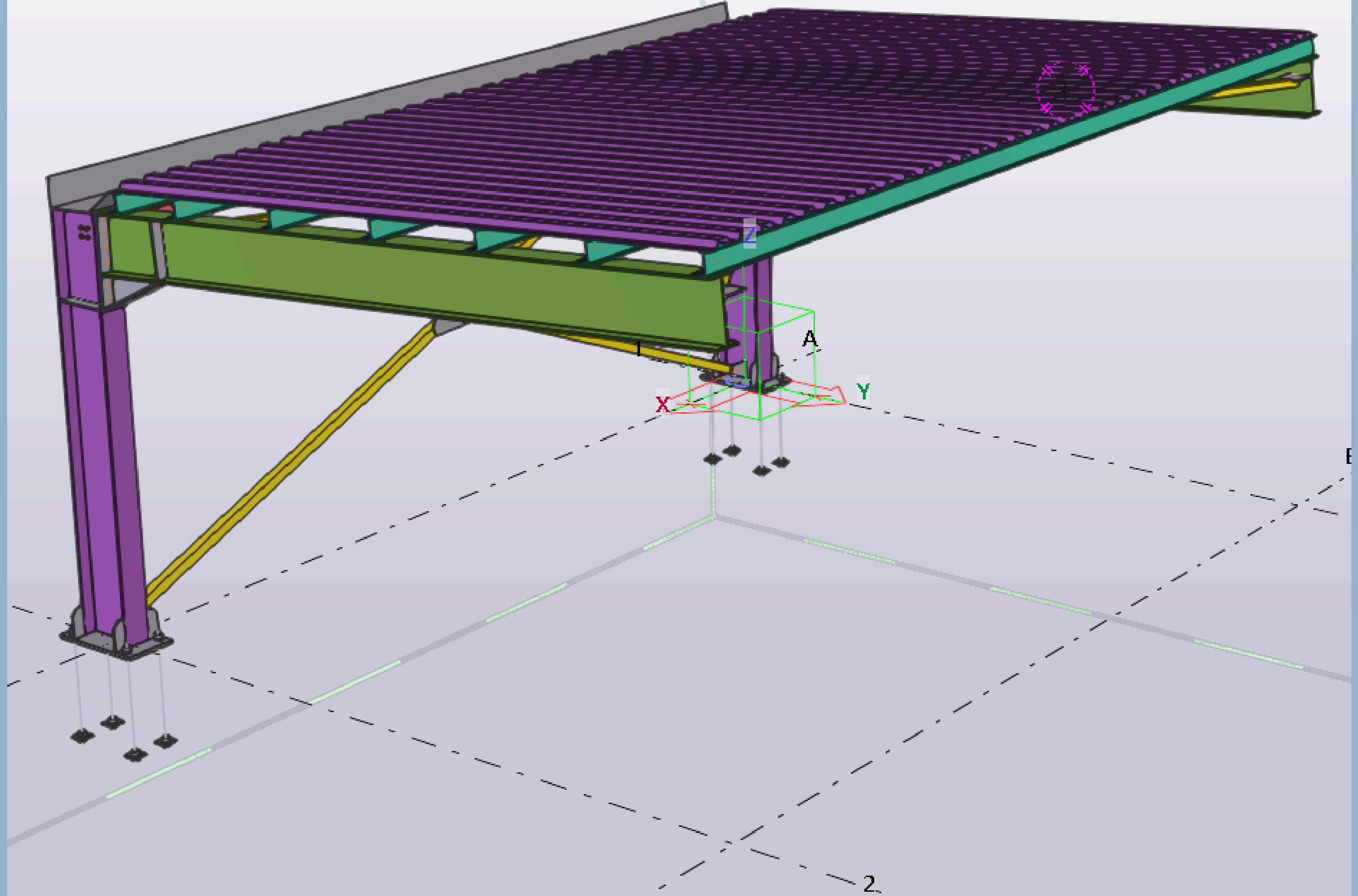


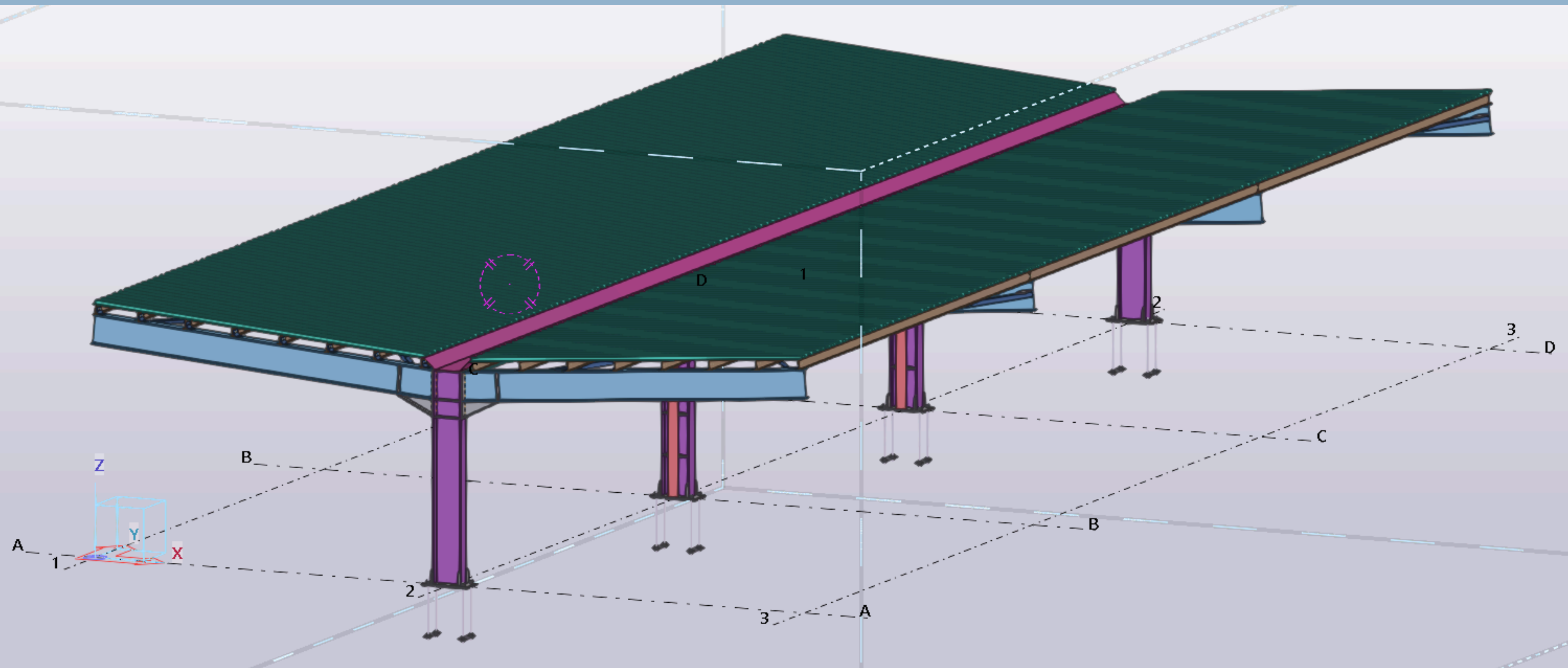


Abris poids léger et garage



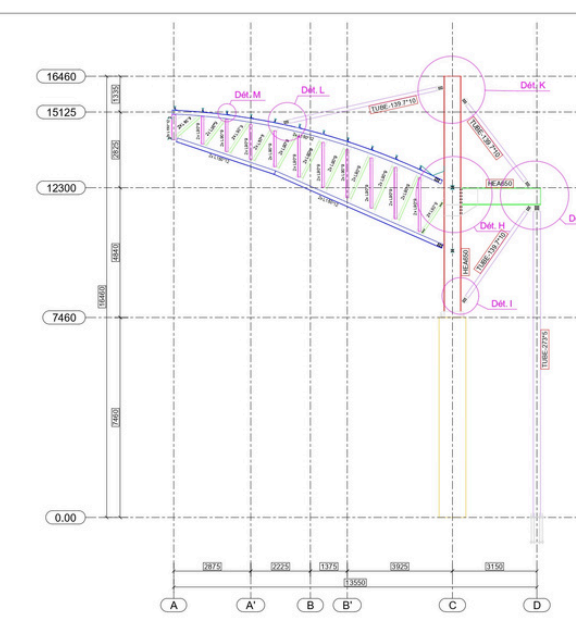
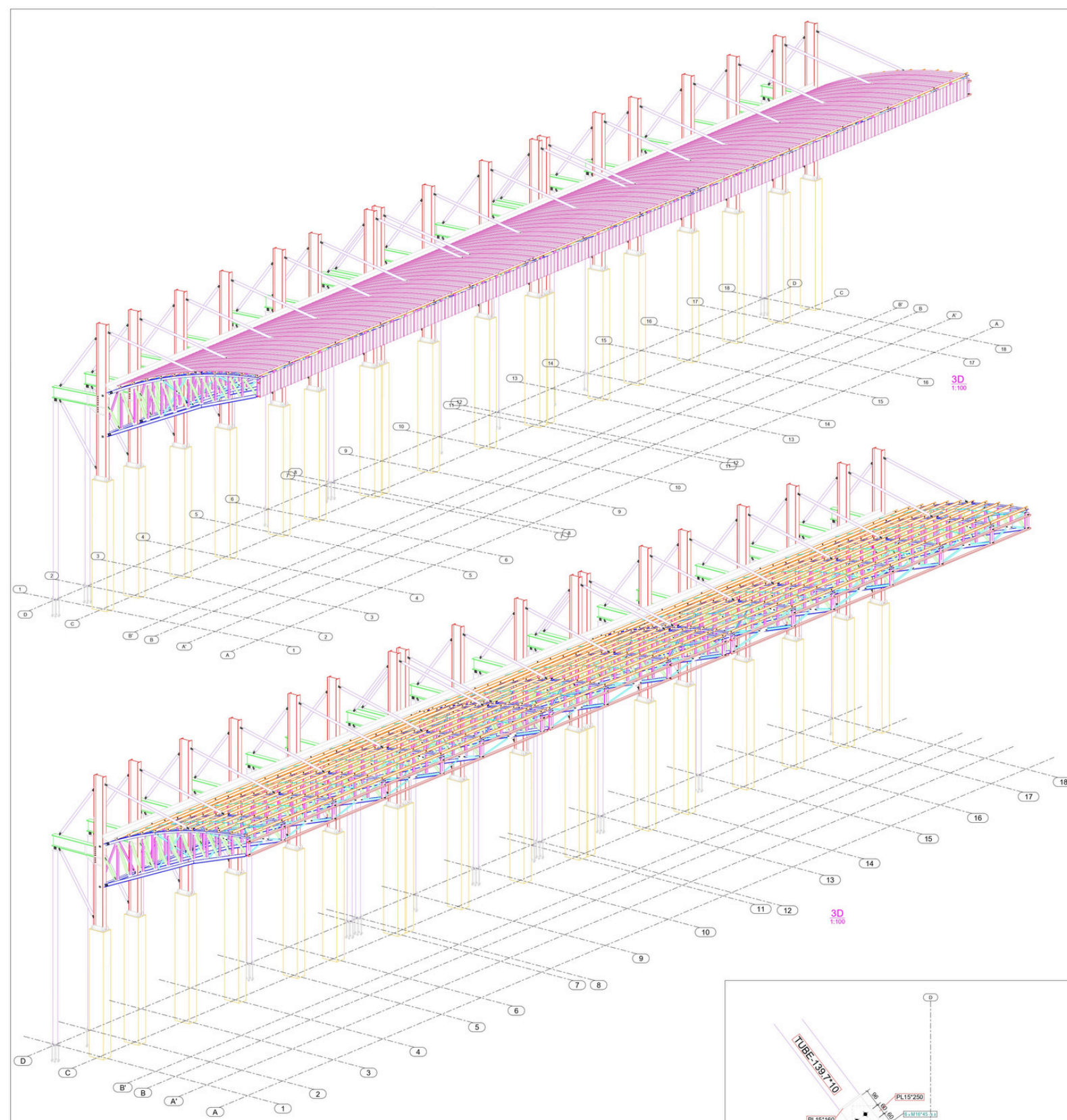
**YOUNES
LAMARI**
INGÉNIEUR EN CHARPENTE MÉTALLIQUE



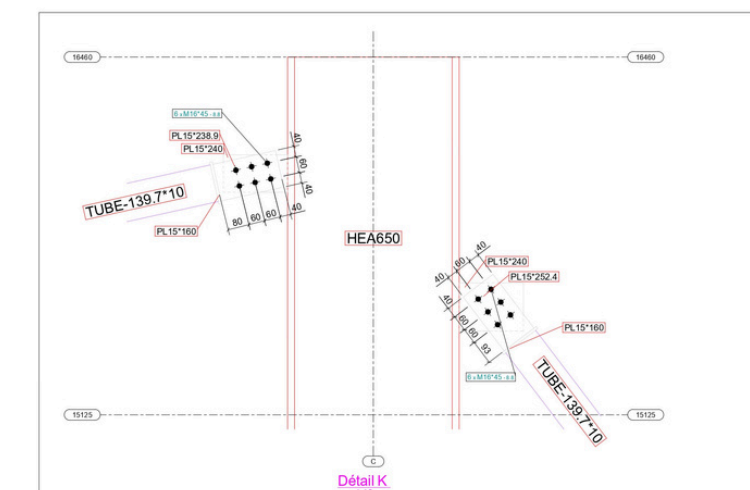
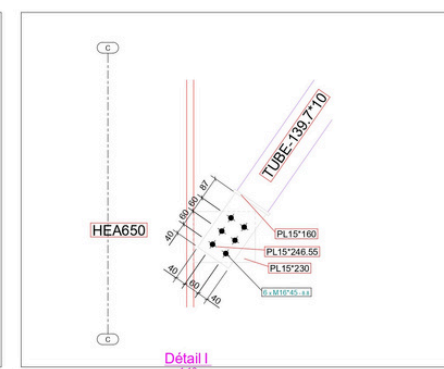
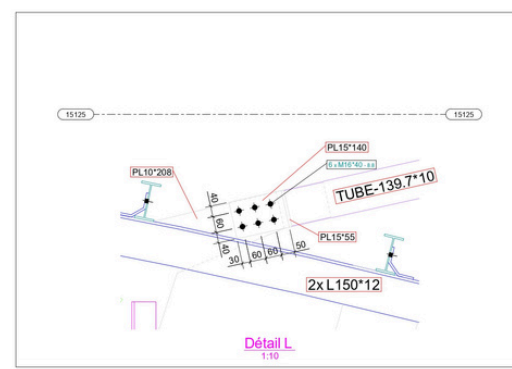
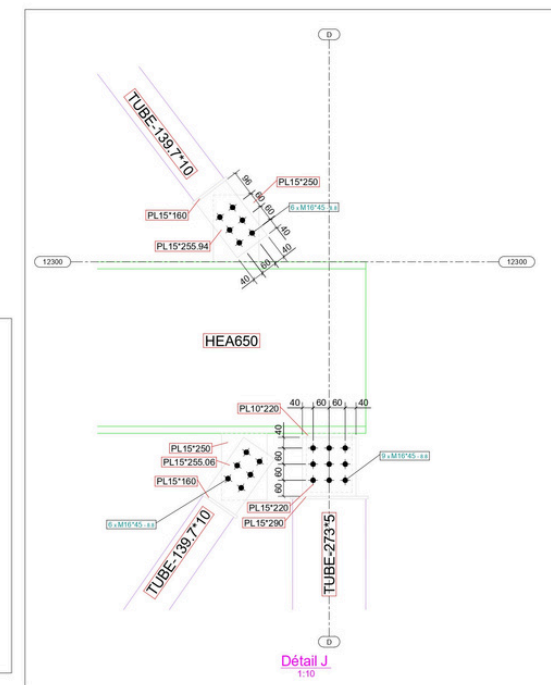
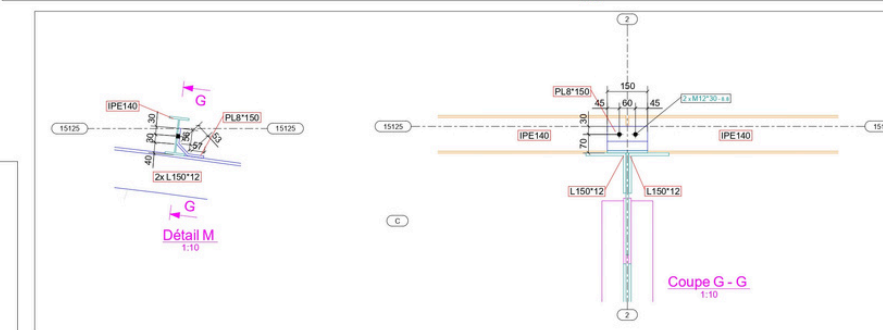
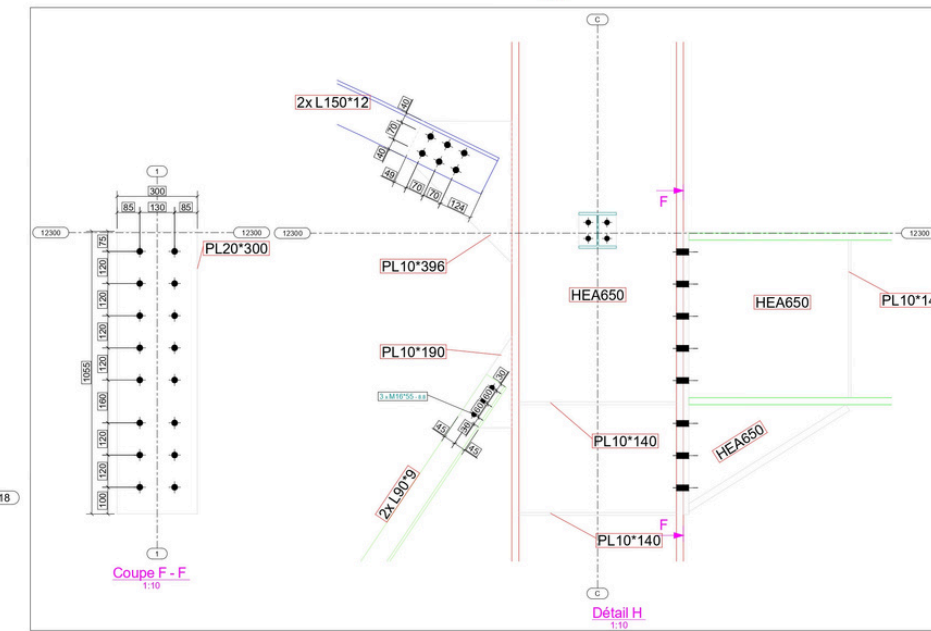




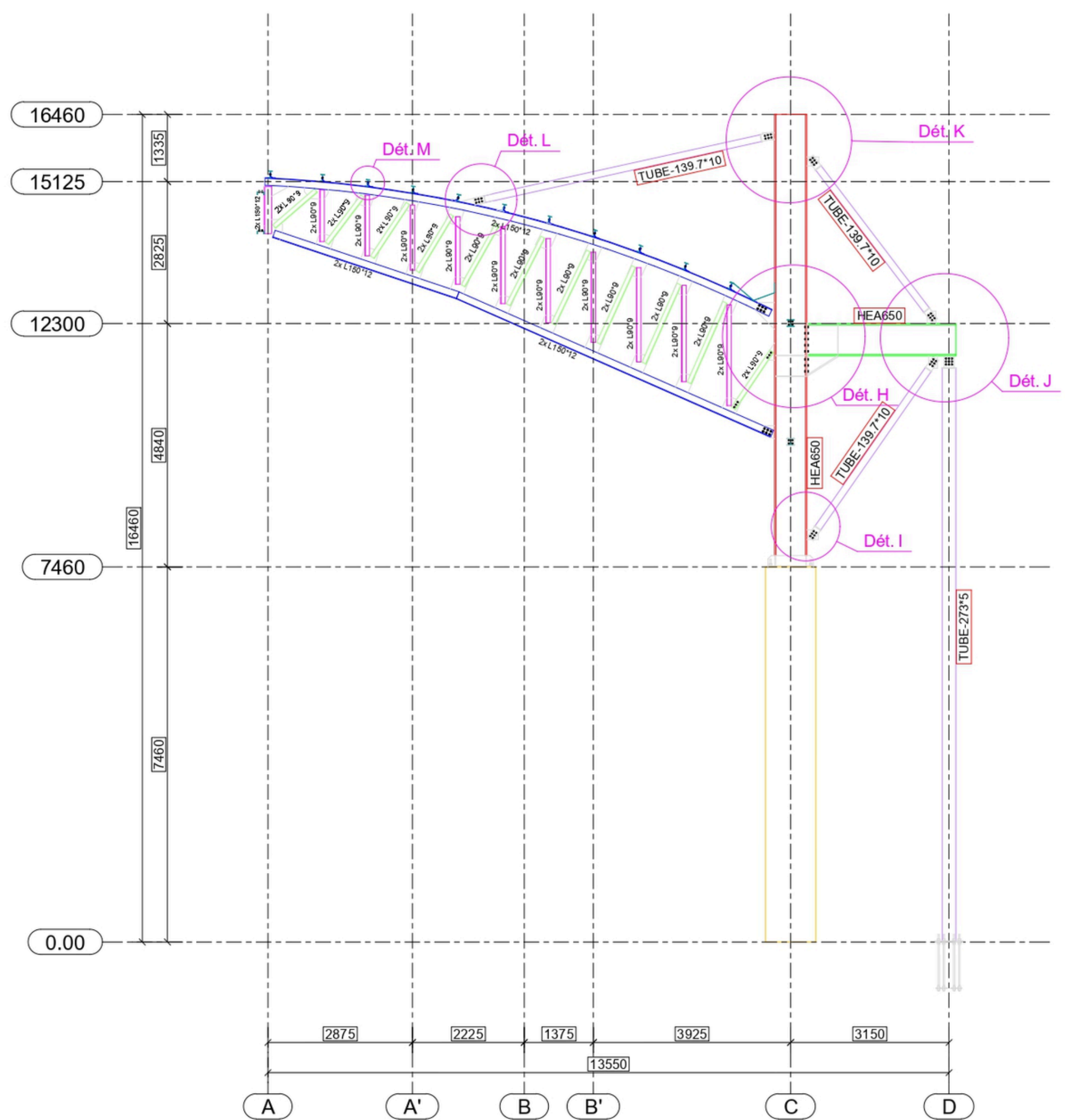
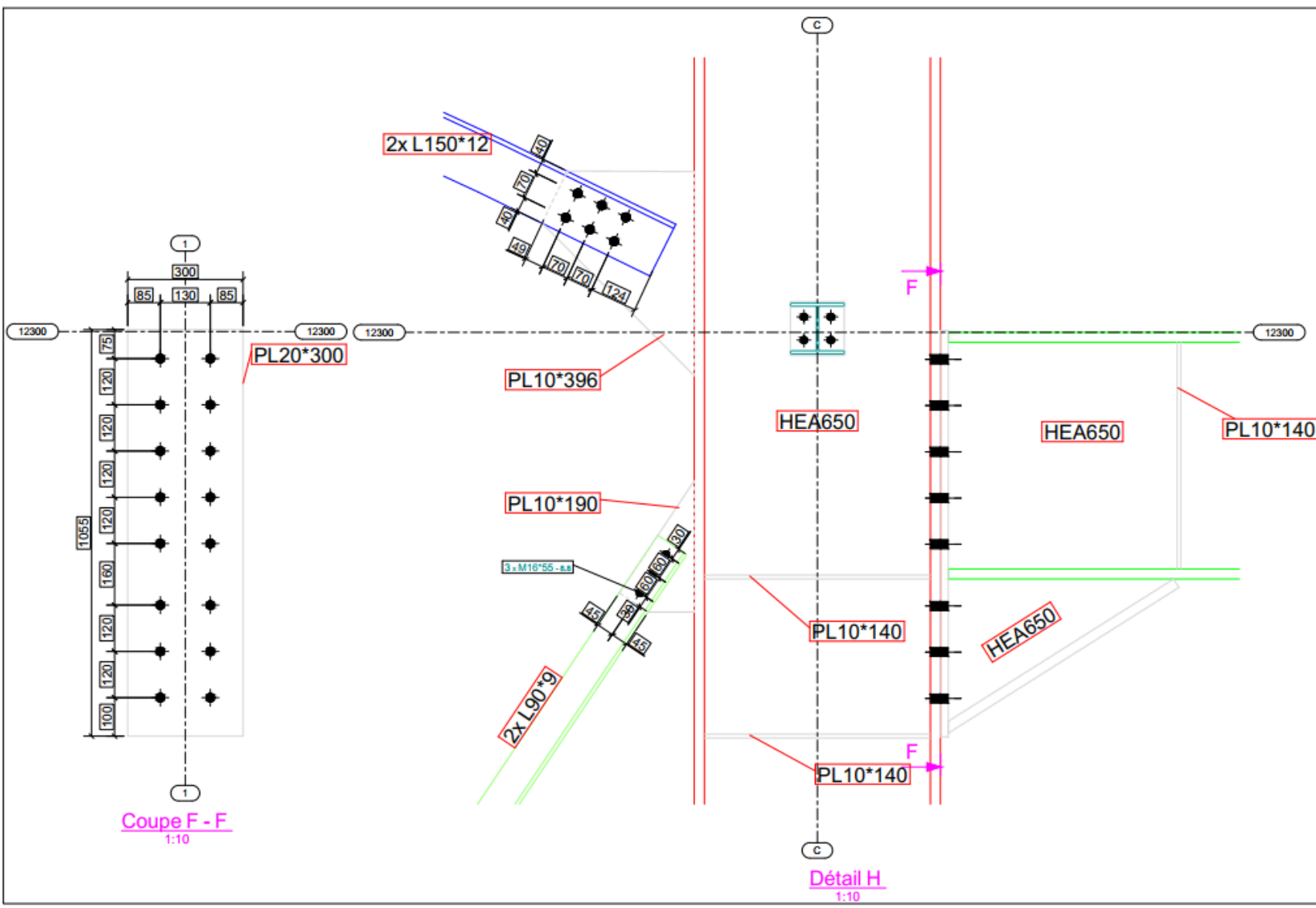
Tribune de stade



File 1 à 18
1:100

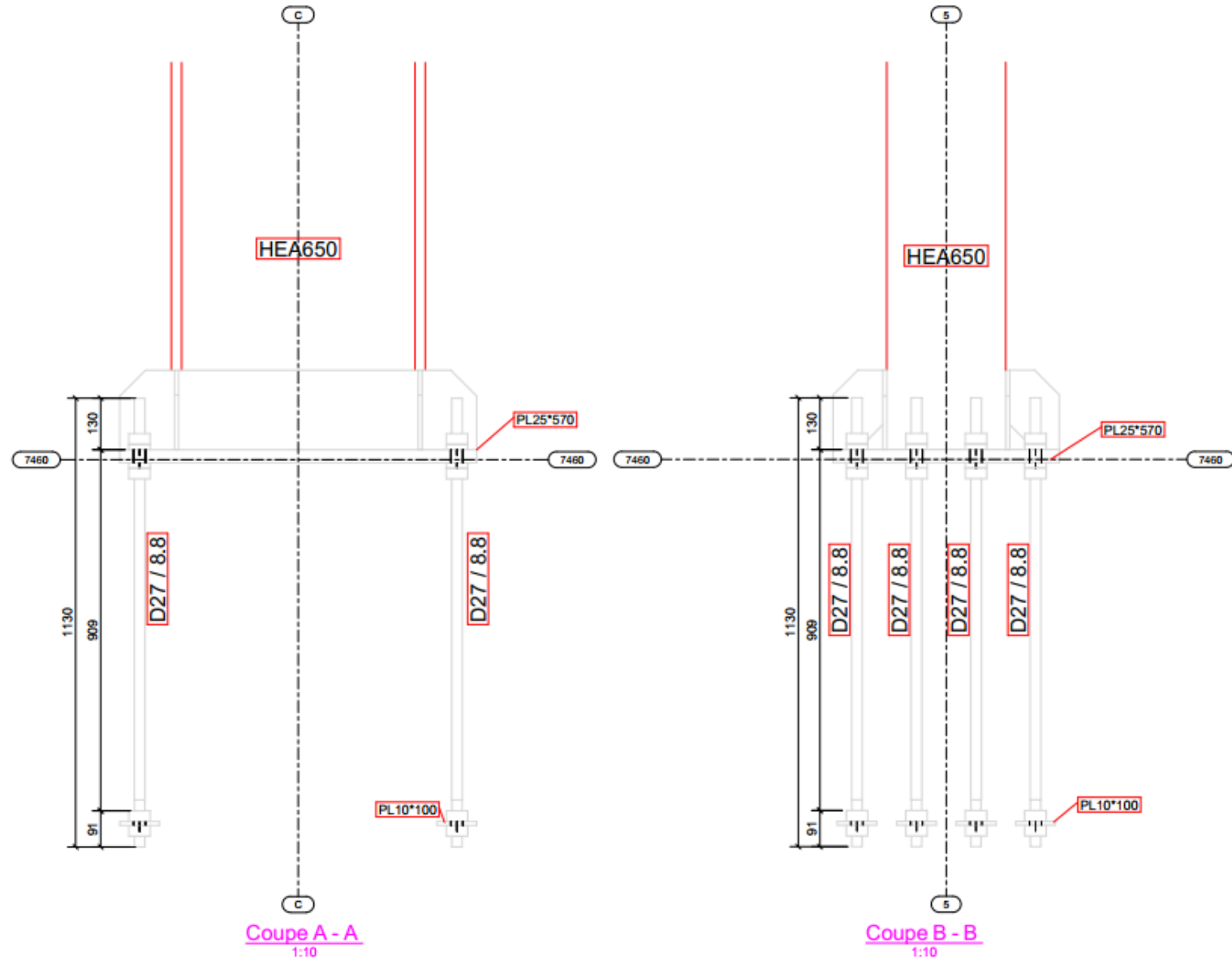
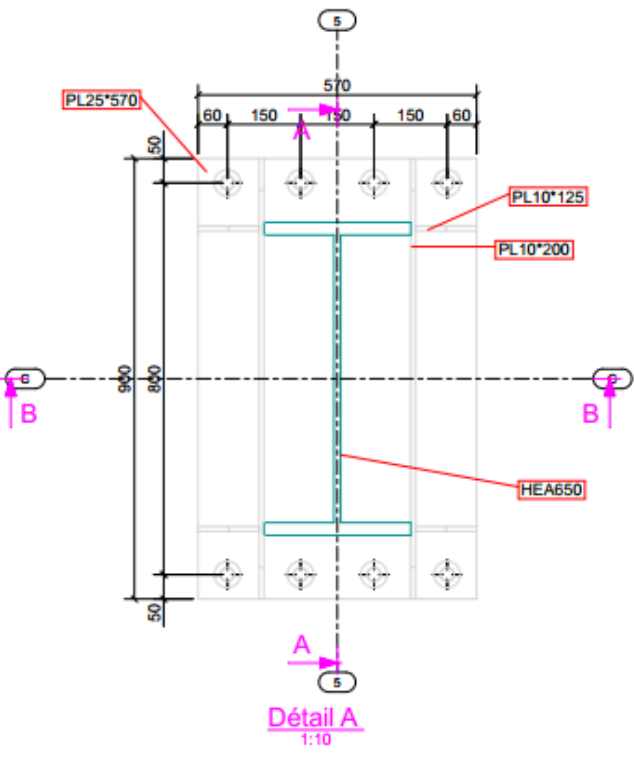
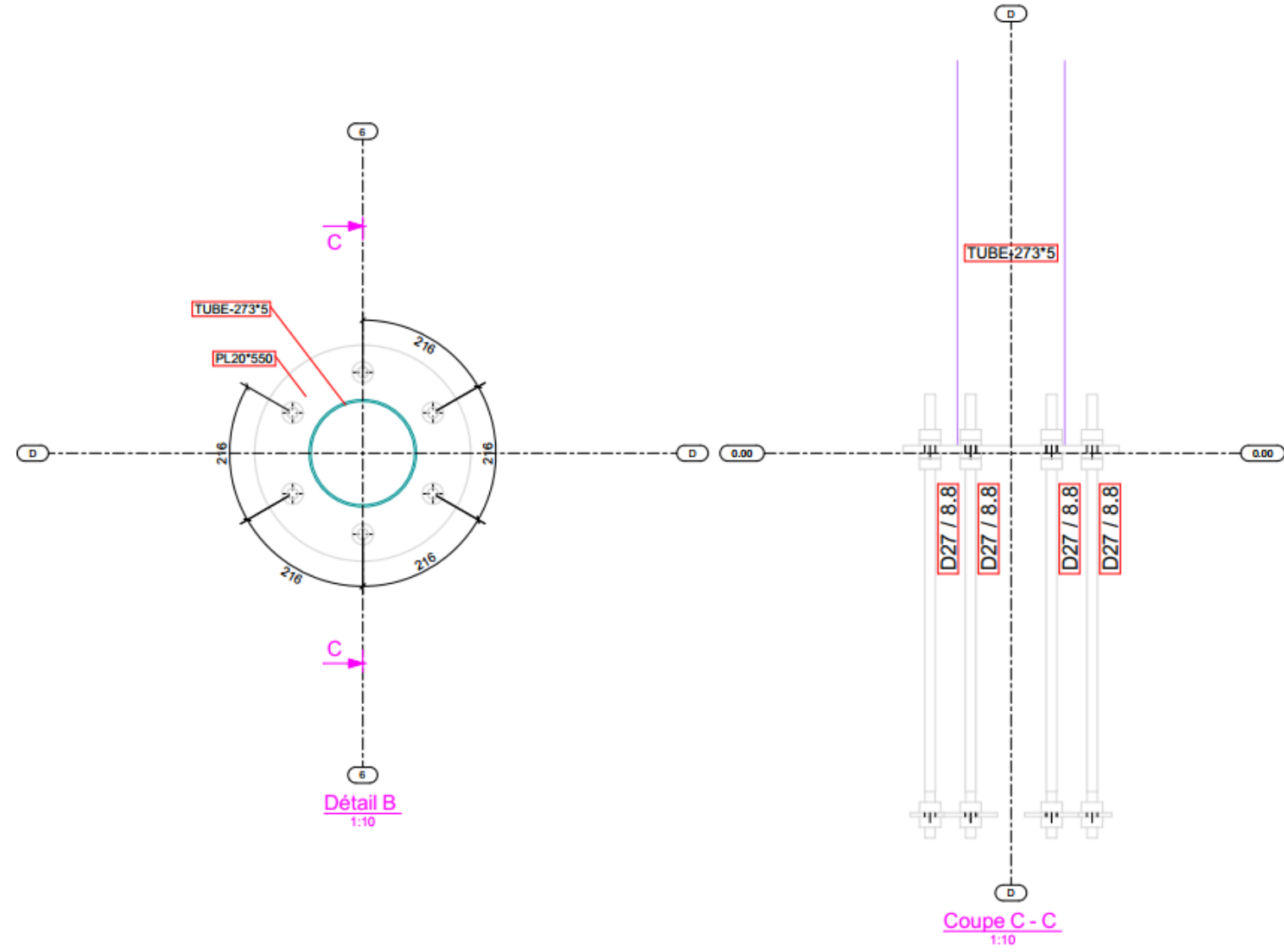


détails du plan



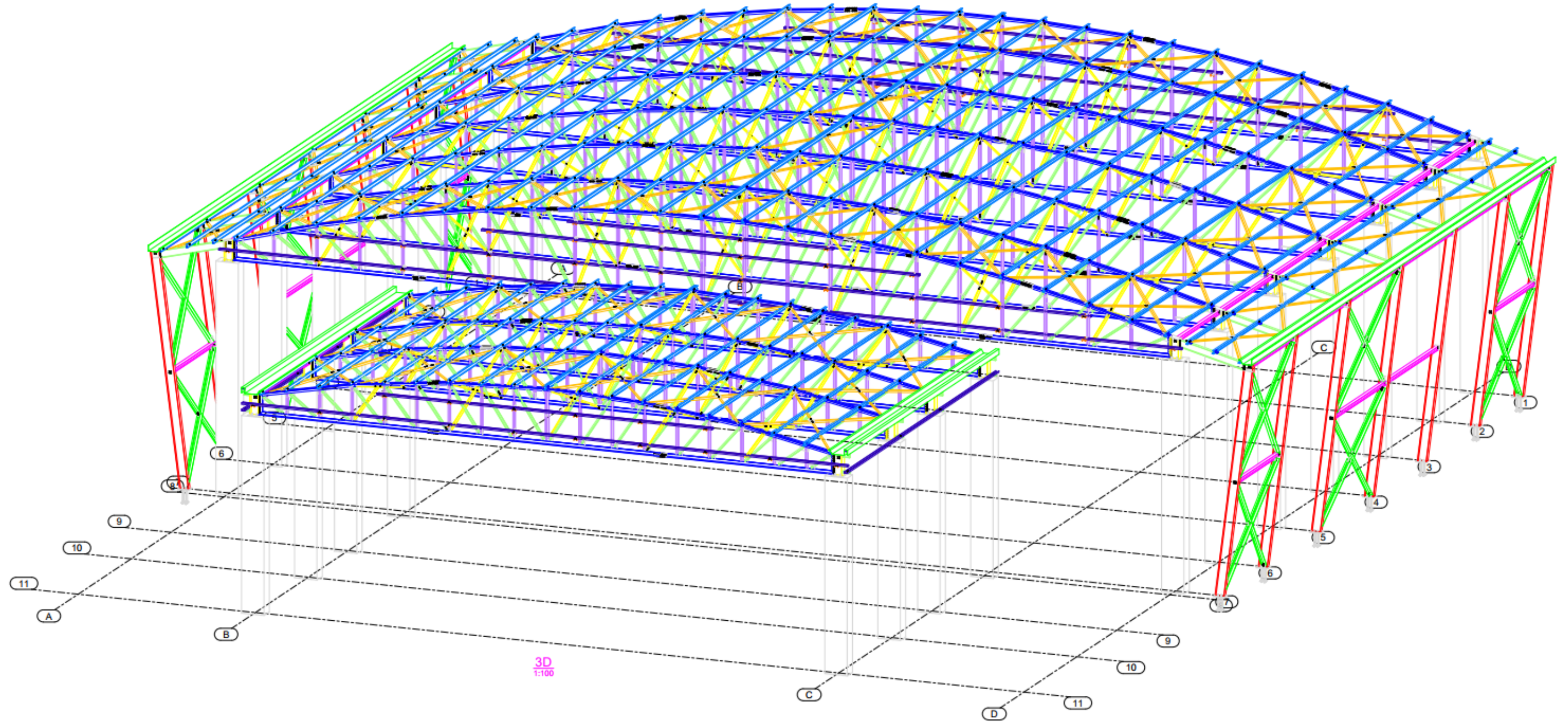


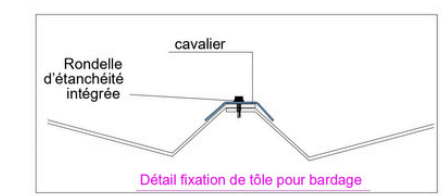
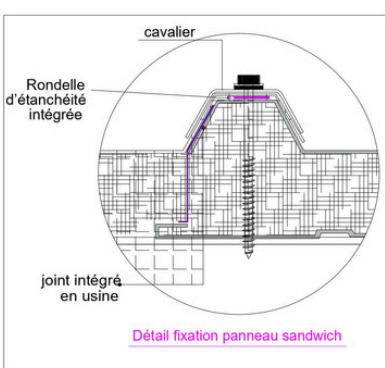
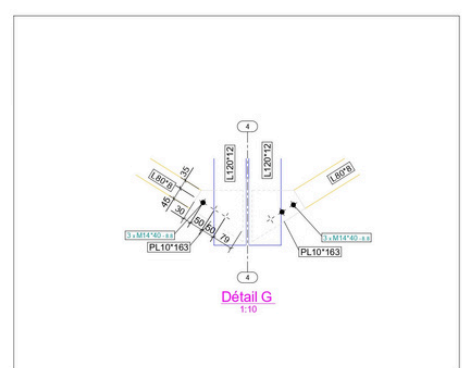
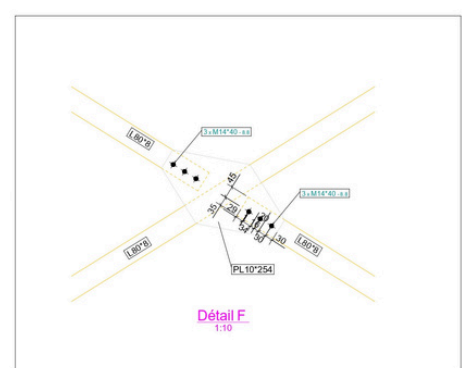
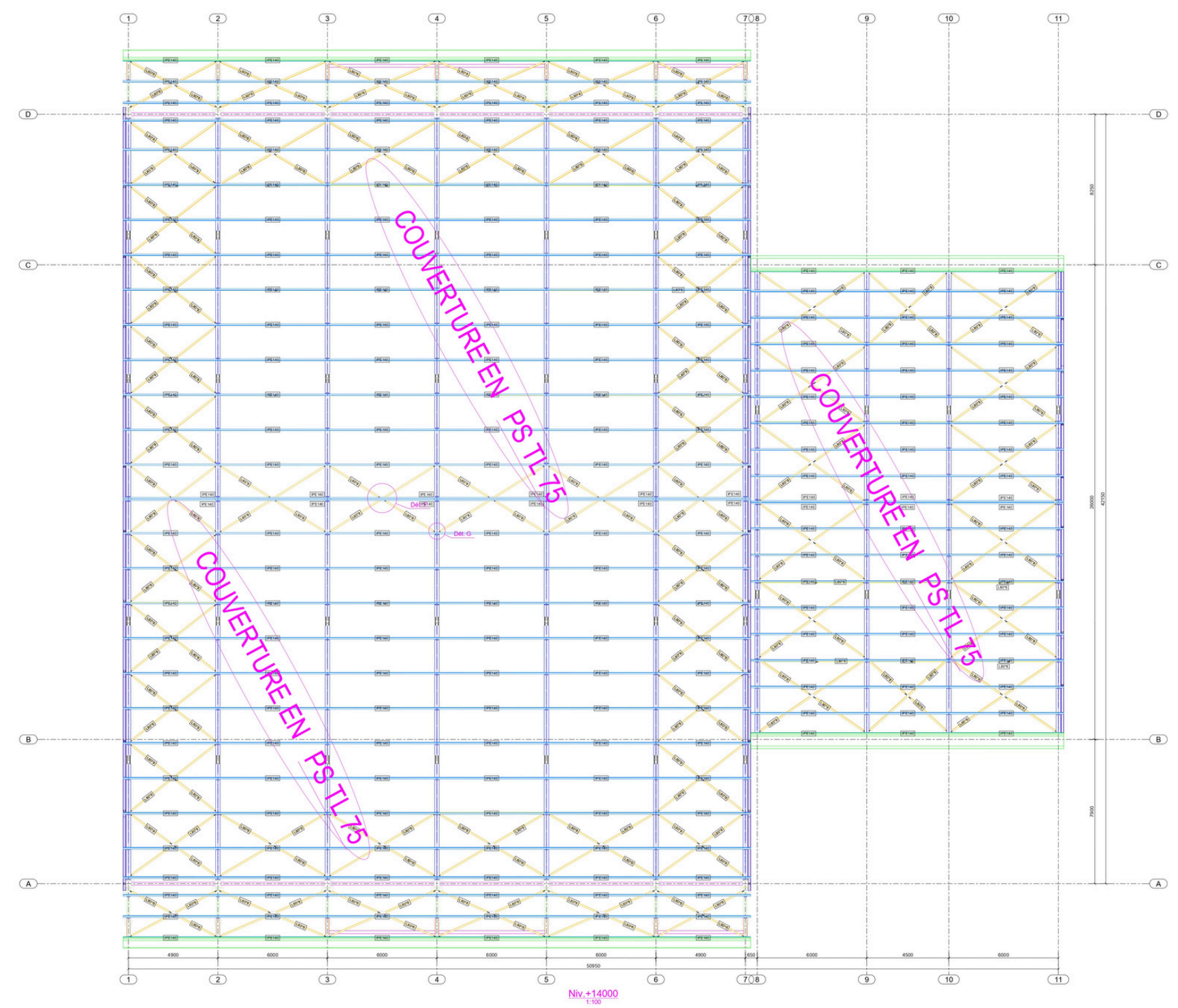
détails du plan





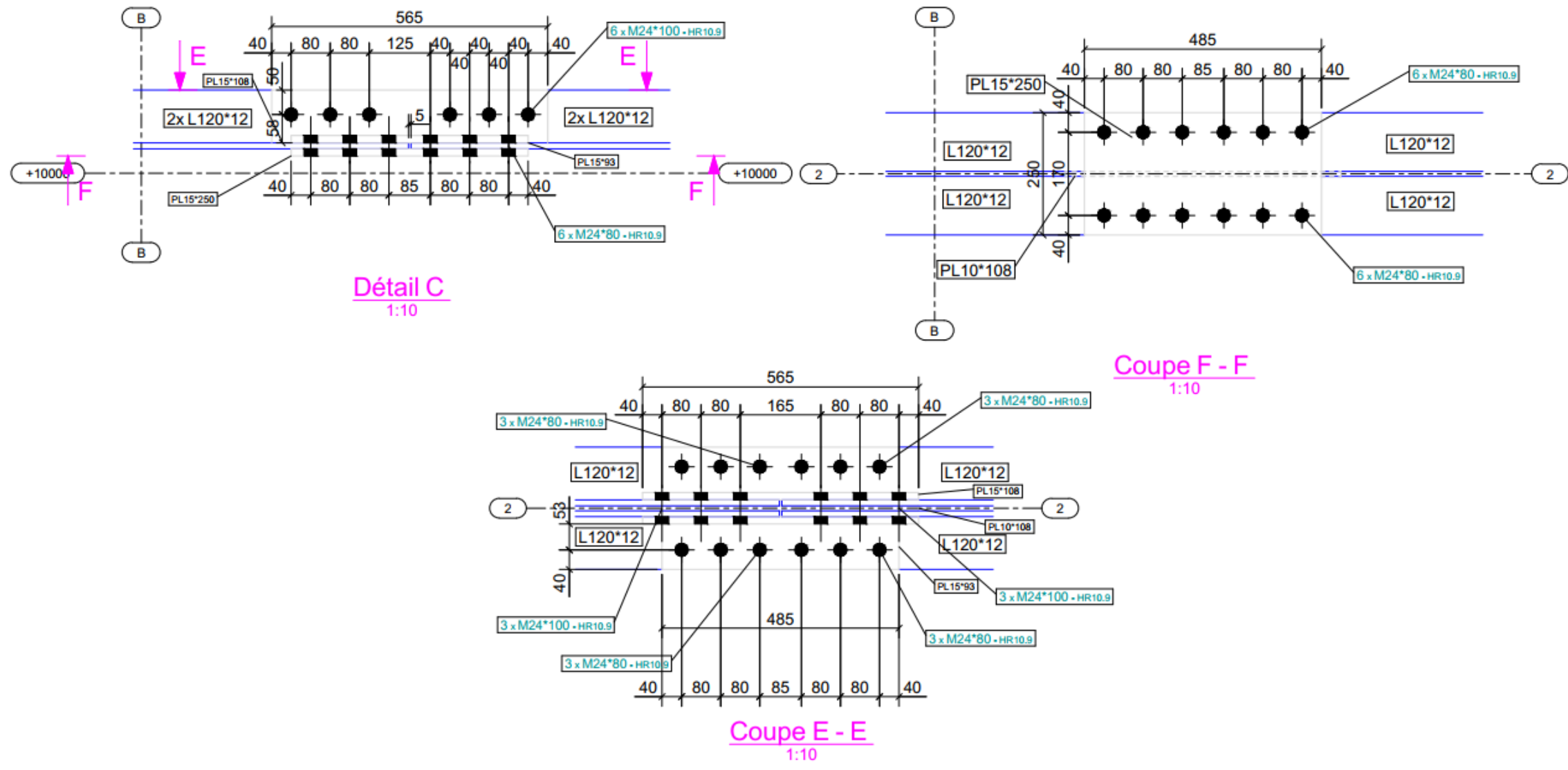
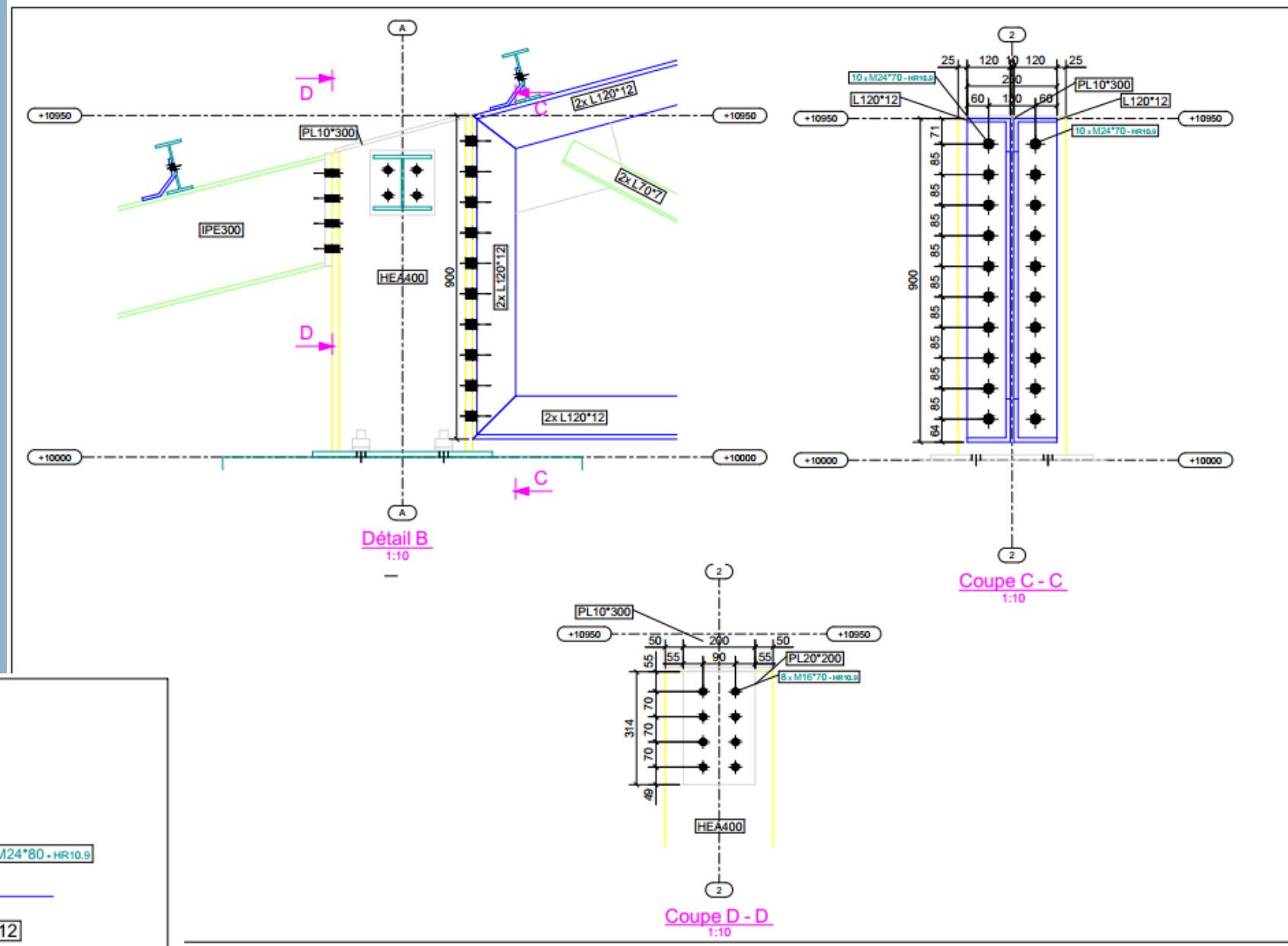
Piscine Semi Olympique





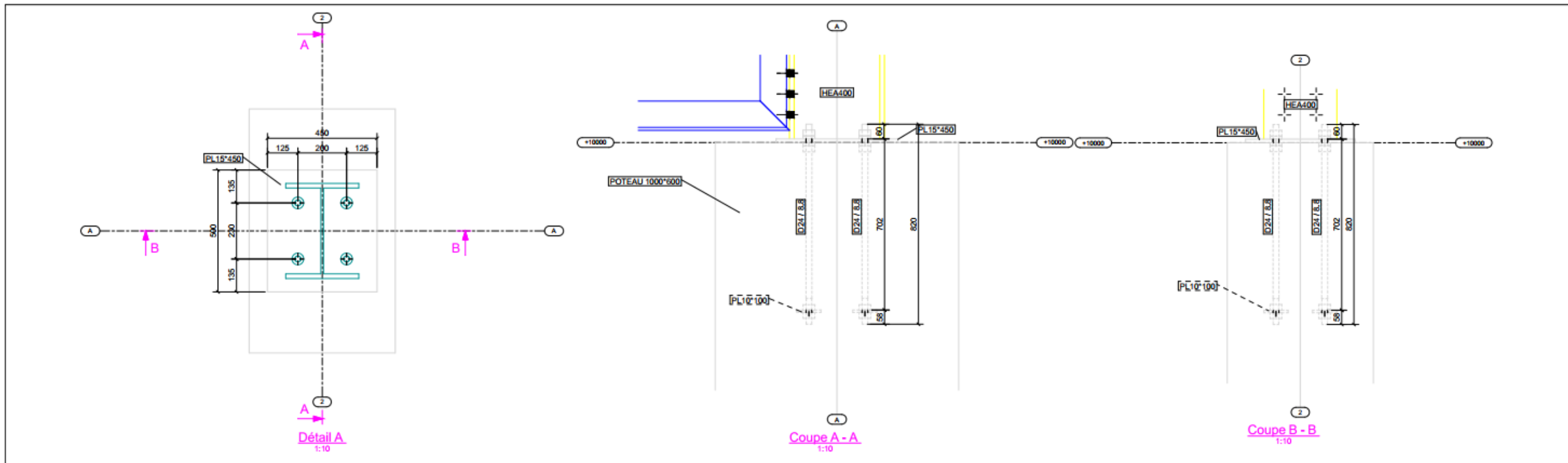
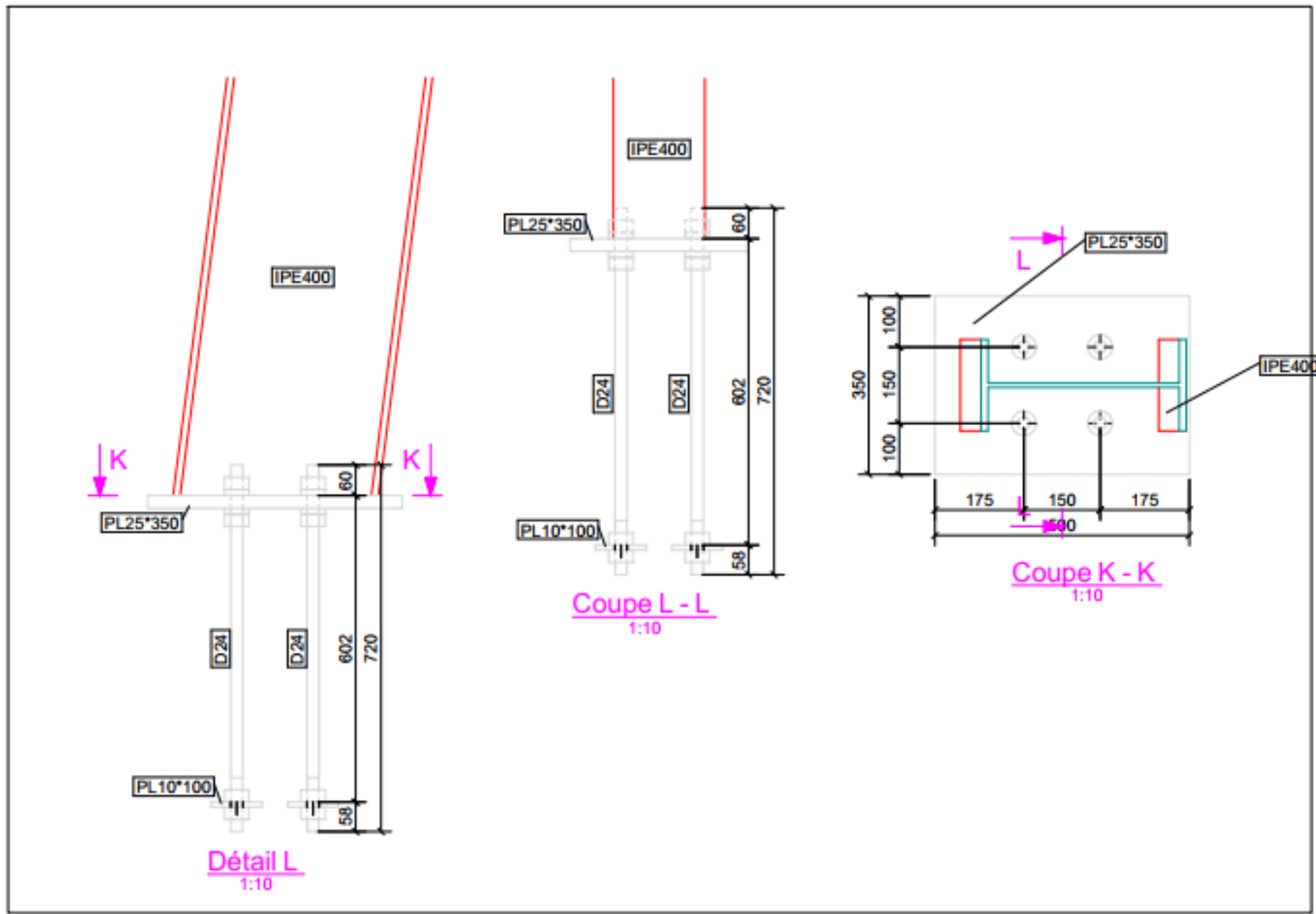


détails du plan





détails du plan

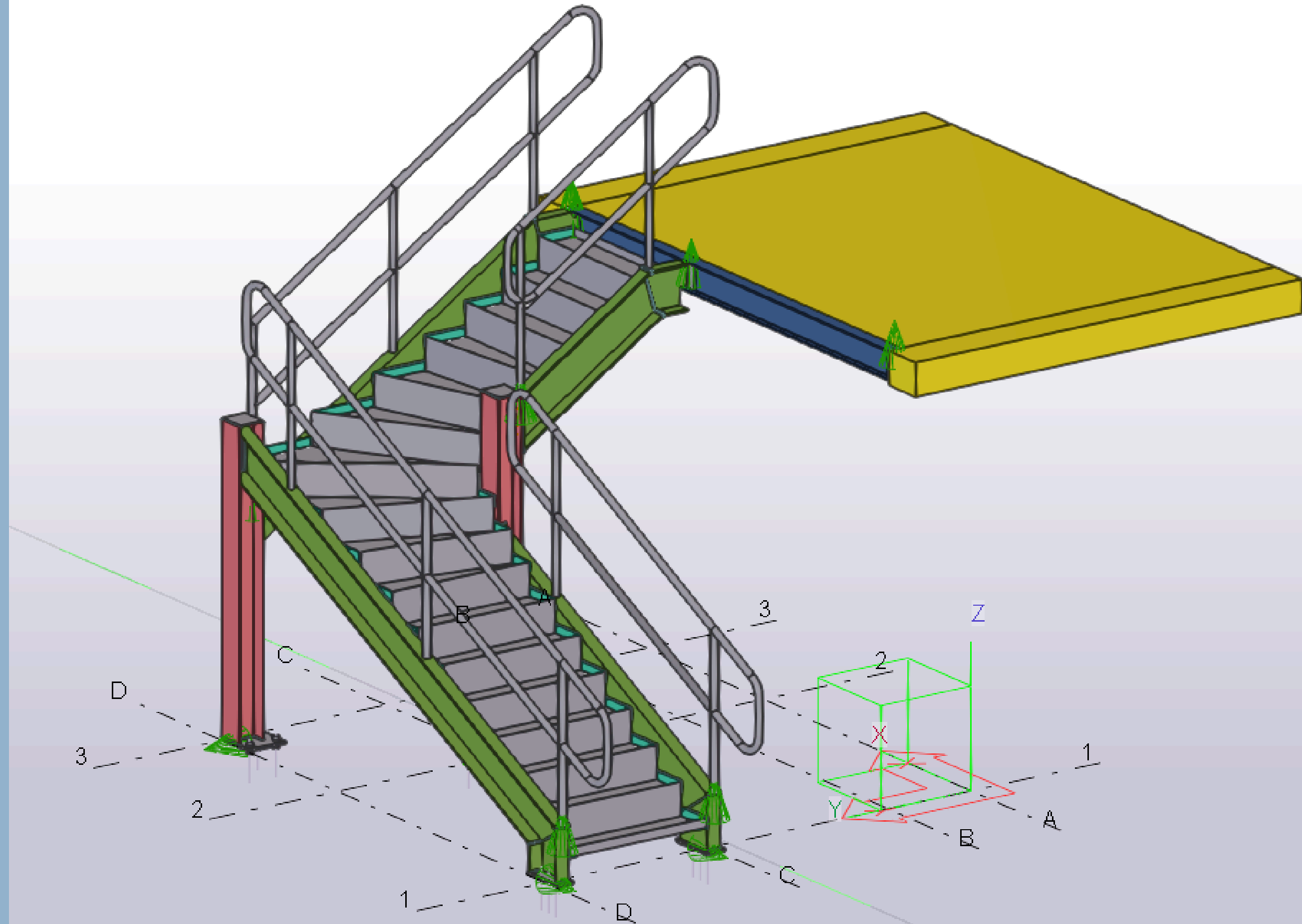




Escaliers



**YOUNES
LAMARI**
INGÉNIEUR EN CHARPENTE MÉTALLIQUE





N'hésitez pas à nous appeler au téléphone ou à nous contacter par e-mail si vous avez besoin de plus d'informations.

Nos Contacts

younesl98@outlook.fr

[linkedin.com/in/younes-lamari/](https://www.linkedin.com/in/younes-lamari/)

+213 5 42 48 12 79

